

## WILSHIRE GRAND CENTER LOS ANGELES, CALIFORNIA

This upscale, world-class, 73-story skyscraper is in the heart of Los Angeles. It is the tallest structure in the Los Angeles skyline and features an 889-room hotel, cutting-edge restaurants, and a state-of-the-art office complex.

This project received the 2013 Architectural Award of Excellence by the Los Angeles Business Council as well as the 2014 American Architecture Award from the Chicago Athenaeum Museum of Architecture and Design.

# WILSHIRE GRAND CENTER

Architect:	AC Martin
Mechanical Contractor:	ACCO Engineered Systems
Representative:	Air Product Sales

**5**  
year  
warranty

# POTTORFF®

For more info, visit [www.pottorff.com](http://www.pottorff.com).

# POTTORFF PRODUCTS INSTALLED IN THE WILSHIRE GRAND CENTER:



## EFD-445 DRAINABLE BLADE LOUVER

This 4" deep, 45-degree drainable blade louver is designed to prevent water penetration in non-wind-driven rain applications by collecting water in frame and blade gutters and channeling it into downspouts and away from airflow paths. The EFD-445 is available in a wide array of anodized and painted finishes including custom color matching.

- AMCA Certified for Water Penetration and Air Performance
- Florida Building Code approved
- 50.4 % Free Area

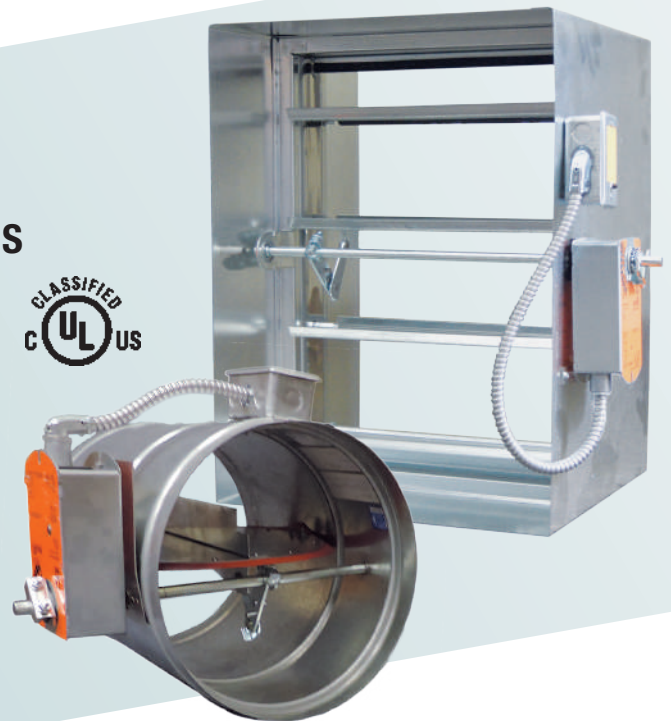
## FSD-141 AND FSD-125R FIRE-SMOKE DAMPERS

The FSD-141 employs triple-V blades for point-of-origin control of fire and smoke in static and dynamic smoke management systems. It is qualified to 2,000 ft/min and 4 in. wg. and has a fire resistance rating up to 2 hours.

- AMCA Certified for Air Performance
- Meets NFPA standards
- Maximum Temperature Rating: 350° F.

The FSD-125R employs a single round blade and comes with mounting plates for installation in round or square openings. It is qualified up to 2000 ft/min and 4 in. wg. and has a fire resistance rating up to 2 hours.

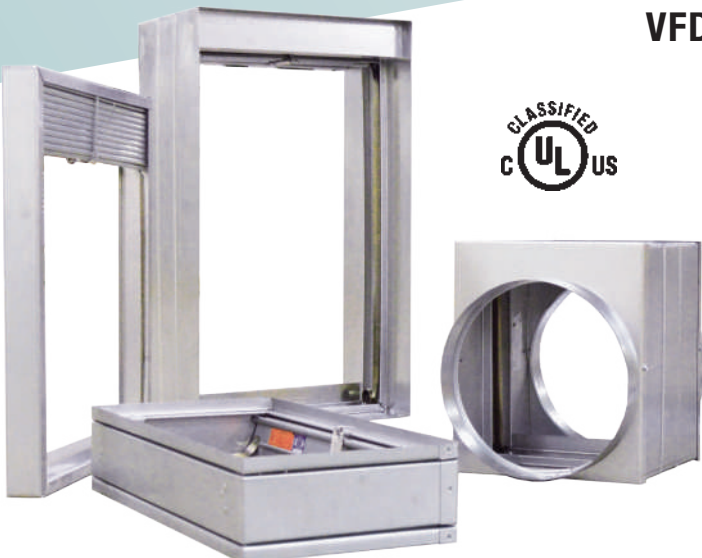
- 3000 ft/min available with optional construction
- Meets NFPA standards
- Maximum Temperature Rating: 350° F.



## VFD-10D CURTAIN BLADE FIRE DAMPERS

The VFD-10D fire damper employs curtain style blades for point-of-origin control of fire in static and dynamic HVAC systems. It is qualified to 4,000 ft/min and 4 in. wg. and has a fire resistance rating up to 2 hours.

- Only manufacturer with a multiple section dynamic curtain fire damper at 120" x 72" or 72" x 120"
- Largest single section dynamic curtain fire damper on the market at 36" x 48"
- Thinline models available
- Stainless steel construction available



# POTTORFF®

For more info, visit [www.pottorff.com](http://www.pottorff.com).